

- 5. Customizing the user interface
 - 5.1 Resizing the user interface
 - 5.2 Docking windows
 - 5.3 Changing languages
 - 5.4 Tutorial mode

Use interface look and size can be changed by the operator to best fit his needs. Workspace settings are remembered when operator logs out of SECURITHOR. After log in, SECURITHOR will display the workspace as it was when operator logged out. Settings are remembered for each operator.

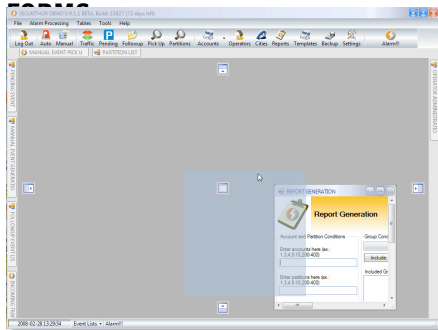
RESIZING

N.B. Resizing and docking are also featured in a video tutorial available on securithor.com

Most windows can be resized and can be changed to floating type. Specific placement on your desktop is allowed. There is no size limitation in SECURITHOR. Resize and place windows using the traditional OS tools.

DOCKING WINDOWS AND

The main SECURITHOR window allows most forms to be docked on sides. This way, you can place forms and features as tabs with auto-hide capability.

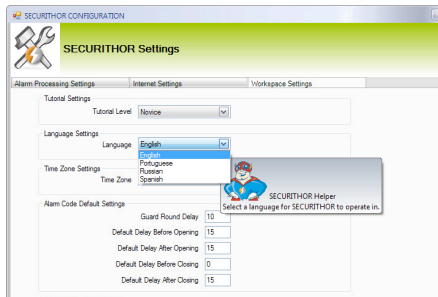


To dock a form, first disable the auto-hide feature of the selected form. This will also disable the auto-hide for all forms on this side of the main ST window. Drag the title bar of a form and drop it on one of the 4 docking arrows to dock the form on a specific side.

Dragging a form outside the main ST window will make it floating window. Dragging on the center docking tab will fill the workspace without latching to sides.

LANGUAGE

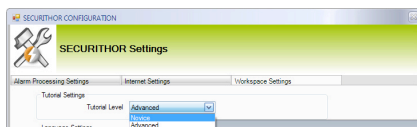
To change the language go to settings > workspace settings > language settings and select from English, Español, Portuguese or Russian.



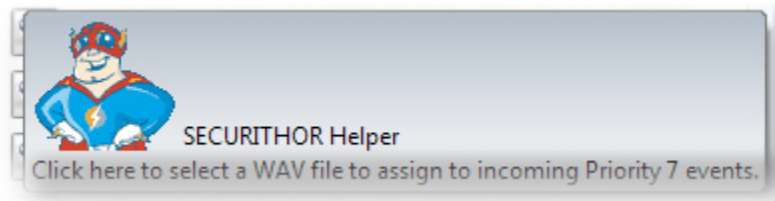
The use of some languages is restricted in OEM version or some language specific version. For example, the Russian version does not include other languages and the Portuguese version is only available from selected dealers.

MCDI can add another language in SECURITHOR if you provide translation. Contact MCDI support department for more details at support@mcdi.com.

TUTORIAL MODE

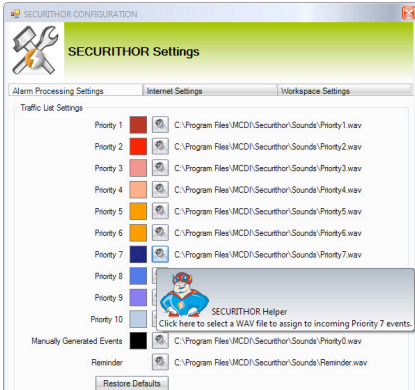


SECURITHOR contains a tutorial mode. In tutorial mode ST displays a contextual helper box when you roll over a topic. To enable or disable the tutorial mode, go to workspace settings>tutorial and select novice (enabled) or advanced (disabled).

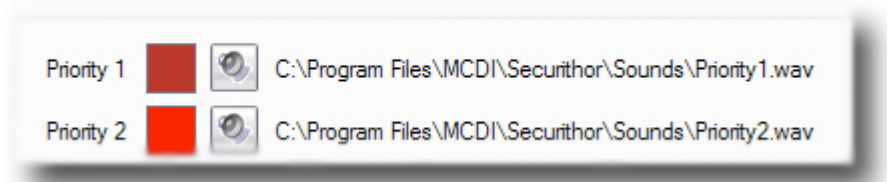


Look for Mr. SECURITHOR in help menus. You can also visit MCDI's SECURITHOR.COM web site for more training options such as Video Tutorials, FAQ section or to register to receive Mr. SECURITHOR tool-tips by email.

CHANGING SOUNDS



SECURITHOR uses 10 sounds according to alarm priorities from 1 to 10 and a specific sound for Manually Generated Events. Those eleven sounds can be changed in the SECURITHOR configuration menu under SECURITHOR Settings > Alarm Processing Settings > Traffic List Settings. Click on the speaker icon to browse and link a new sound.



File must be of .wav format and keep the MCDI name convention (priority#. It is best to limit the size of the file and keep it to a minimum. Large files may impede SECURITHOR performance significantly.

To revert to MCDI's preselected sound, click on the Restore Defaults button at the bottom of the SECURITHOR Settings window.

You can also select priority color from this menu. Click on the square color box between the Priority Level and Speaker Icon.

Restore defaults button will also restore Priority colors.