

ADDING ALARM RECEIVERS STRECEIVER COMPONENT

As of version 1.5.5, all receivers reporting to PC in MCDI, Surgard MLR2, Ademco 685, SK9000/9500 formats by mean of serial ports. Communication over USB port exists. It is well established with MCDI receivers but needs to be validated with other receivers. Use a virtual serial port is required. Some IP compatibility exists with MCDI Extrim receivers.

SECURITHOR's communication module is called STReceiver. It is located in the SECURITHOR folder. Run STReceiver to configure the communication between receivers and SECURITHOR. See description figure at end of section

ALARM RECEIVERS SUPPORTED IN VERSION STRECEIVER 1.5.5:

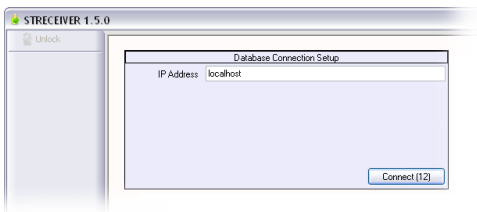
MCDI's TLR, TLR+, SA-TLR+, EXSA, Decrypta 1, Decrypta 2, Decrypta 3,
MCDI's Exprecium 1, 2
MCDI's Exprecium 3 and 3r
MCDI's Exprecium D
MCDI'S RACK16
Decrypta 5, Decrypta 6 (over IP, USB or serial ports)
Ademco 685 Format
Surgard MLR2, MLR2000 Format
Surgard System 3 (partial)
Radionics 6500
Silent Knight 9000 (under list SK9500)
Silent Knight 9500 (Contact ID only)
SMS - MCDI defined format (Contact ID SMS).

Other receivers are considered for version 2.0. Legacy receivers present in WinSAMM may be added depending on market conditions.

PASSWORD

Opening STReceiver requires password. Default password is 'securithor'. It can be changed by clicking the change button in STr left column after unlocking settings.

By design, there is no quit button. To quit first unlock and enter password. A form will prompt you to quit. Answer yes to quit STreceiver or No to keep running. See description figure at end of section



CONNECTING TO DATABASE

At start, STReceiver asks for an IP address in order to connect to SECURITHOR'S PostgreSQL database. To change connection address, exit STReceiver and re-start to connect to another IP address.

By default 'localhost' is selected in STReceiver in order to connect to machine on which it is running. If running on a different machine from SECURITHOR's Core, enter IP address of machine running SECURITHOR PostgreSQL database. Format of IP address is IP V4 xxx.xxx.xxx.xxx . Port information is not necessary.

With ST1 or STnet, you can install STreceiver on a separate machine from the one running SECURITHOR database.

It is possible to install several STreceiver (one per machine) and connect to SECURITHOR ST1 or STnet. Refer to installing SECURITHOR Network Edition in order to connect to STnet.

ADDING A RECEIVER

Available receivers show in the left column as COM 1 to COMn. COM number does not indicate COM port of computer but Communication channel number N in STreceiver.

To assign a name or alias, click on desired COM to open option form. Change name in port configuration>Alias

Select receiver type and select receiver specific parameters. Most receivers communicate with automation software at 1200 bauds. Refer to your receiver user guide for more advanced settings.

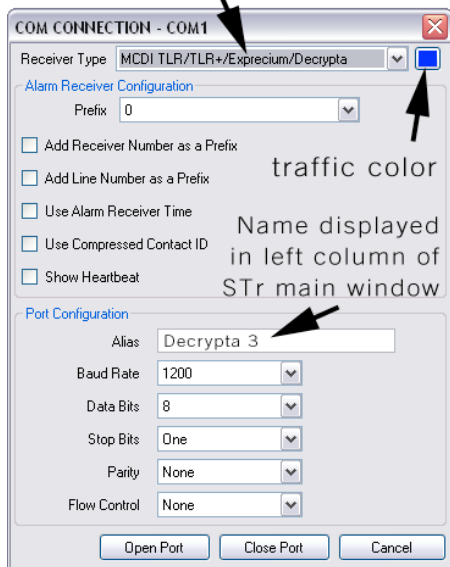
Even if you don't recognize your receiver select one with a reporting format equivalent to your receiver's. In doubt contact MCDI support staff support@mcdi.com with the specific details of your receiver.

OPENING COMn/Receiver configuration

Receiver type

Select receive type according to name or compatible format

Select receiver by type/description. If receiver name does not appear, select one with equivalent reporting format.



Adding a receiver
COM Connection set-up

Selecting color (top right button)
Will assign this color to incoming traffic from this receiver.

Prefix
Select number from 1 to F to be added in front alarm event. Typically used to group accounts, to move alarms from a specific receiver to go to a range of account.

Add receiver number as a Prefix
Not related to previous Prefix settings. Number supplied by receiver.

Add line number as a prefix
Number supplied by receiver to identify line

Use alarm receiver time
Uses time stamp from receiver instead of STreceiver's own time. When de-selected, STreceiver time (and time zone) replaces alarm receiver time. It is recommended to verify time settings regularly or at beginning of each shift.

Use Compressed Contact ID
Changes Contact ID definition to Compressed form.

Show heartbeat
When selected, heartbeat character will be viewed in traffic.

Most serial or USB receivers will send character '@'.
Receiver number, line number are usually sent by receiver as well.
COM number or Alias name is added by STR

Silent Knight receivers show heartbeat as an event.

MCDI's IP receiver send a heartbeat packet. This is transparent to use and it displays as 'heartbeat' in traffic window.

PORT CONFIGURATION

Alias
Enter name of your choice to identify receiver easily.

Baud rate
Select and match speed from receiver. Typically 1200 bauds.
Baud rate not required for IP receivers or USB receivers.

Data bits
Usually set at 8. Length of each byte.

Stop bits
Number of stop bits. Usually left to 7.

Parity
Usually left to one when using 7 stop bits = 1 byte

Flow control
Usually left to None. Option available to set to Request to send next byte.

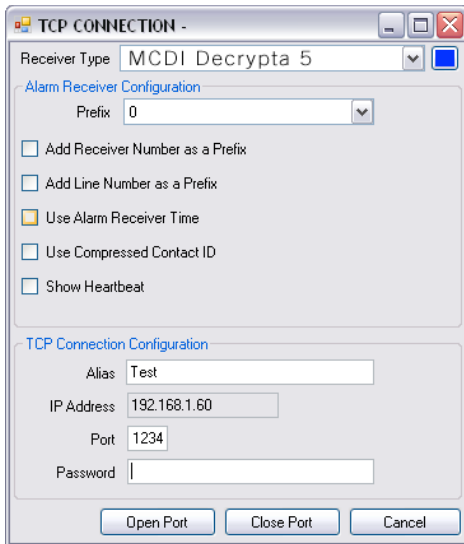
Open port/Close Port/Cancel
Open will create port in the left column and traffic window. Use as well to Update.

Close will remove receiver from left column and traffic window.

Cancel will cancel changes and return form to previous settings without closing the Connection form.

NEW TCP/IP / ADDING A MCDI IP RECEIVER

Select to establish a IP communication using the MCDI IP format or ROF format with Extrium family or receivers, D5 or D6. Established communication with a MCDI IP device will show under TCP/IP. Traffic will be amalgamated in the traffic window.



TCP Connection Configuration panel allows for customization of:

Receiver type

Select receiver type Decrypta 6. This format is common to all MCDI IP receivers.

Selecting color (top right button)

Will assign this color to incoming traffic from this receiver.

Prefix

Select number from 1 to F to be added in front alarm event. Typically used to group accounts, to move alarms from a specific receiver to go to a range of account.

Add receiver number as a Prefix

Not related to previous Prefix settings. Number supplied by receiver.

Add line number as a prefix

Number supplied by receiver to identify line

Use alarm receiver time

Uses time stamp from receiver instead of STreceiver's own time. When de-selected, STreceiver time (and time zone) replaces alarm receiver time. It is recommended to verify time settings regularly or at beginning of each shift.

Use Compressed Contact ID

Changes Contact ID definition to Compressed form.

Show heartbeat

When selected, heartbeat character will be viewed in traffic. MCDI's IP receiver send a heartbeat packet. This is transparent to use and it displays as 'heartbeat' in traffic window.

TCP CONNECTION CONFIGURATION

Alias

Name selected will display in left column under TCP/IP

IP Address

Enter IP Address of receiver. IPV4 format

Port

Enter IP port of receiver. 5 digits maximum. Insure port is not blocked by your computer or firewall.

Password

Enter matching password for your MCDI IP receiver.

Open port

Will add this receiver in STreceiver or will actualize settings

Close Port

Will remove this received from STreceiver

Cancel

Will revert to previously saved settings.

STRECEIVER MESSAGES

Sometimes STr will display messages in traffic window. The following messages are displayed in traffic window but are not logged in LOG files:

-Port opened

-Port has not responded for more than 1 minute

-Listening to port

ACOMX account 0 (denotes absent COM port where X is the number of port)

-RCOMX account 0 (denotes restored COM port where X is the number of port)

-Wrong password.

USING STRECEIVER WITHOUT USING SECURITHOR (CREATING LOG FILES ONLY)

It is possible to use STreceiver without SECURITHOR in order to use Log files only. However, SECURITHOR must be installed at first. By opening only STreceiver, log files will be created and continuously updated without having to use SECURITHOR. STreceiver is independent from SECURITHOR and therefore doesn't need unlocking beyond SECURITHOR's trial period.

LOG FOLDER

Upon installation, STreceiver creates folder 'Logs' in the MCDI>STreceiver folder. Sub folders are created per month and year. Files for day and receivers.

Format (typical)

HH:MM:SS.milliseconds [tab] Alarm [CR or DC4 in SG mode]

Alarm event includes Caller ID when part of the event.

CR is changed for DC4 in Sur-Gard Mode

This feature is not supported out of support contract or current SECURITHOR warranty period. It is distributed as shareware without warranty of fitness.

Feature described are current as of Nov. 2010, STr version 1.5.0.

STreceiver description

